



CERTIFIED LAND CORNER RESTORATION/REESTABLISHMENT

CERTIFIED LAND CORNER RESTORATION (perpetuated corner or accepted corner)

CERTIFIED LAND CORNER REESTABLISHMENT (lost or destroyed corner)

Description of original monument and accessories and subsequent surveys:
(Include date and reference to original and subsequent surveys (book and page))

GLO notes Vol. 274 Pg. 438
Post; 12" Hackberry N40W 48 lks.
12" Hackberry S30E 7 lks.

Susan Magierowski, Apr. 1990, found 2 3/4" disk w/ "+" . MLS doc. #45338.

Description of corner evidence found or a concise statement of the method used to reestablish this corner:

"32 | 32"

Set monument box over 2 1/2" disc w/ 5 | 5 at the intersection of NE 48th St. and N. Brighton.

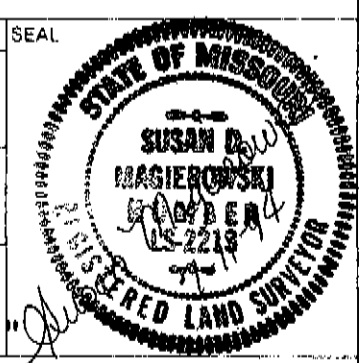
Description of monument and accessories established to perpetuate the location of this corner:
(Provide a sketch of the corner on the back of this form)

"32 | 32"

Existing 2 1/2" disc. w/ 5 | 5

RM1 10.0°- 4.23ft. - Ctr. water valve
RM2 30.0°- 45.71ft. - Ctr. manhole
RM3 126.0°- 62.10ft. - Ex. "+" NW cor. conc. traffic light base
RM4 231.0°- 35.43ft. - "+" NE cor. conc. traffic light base
RM5 289.0°- 40.87ft. - Ex. "+" SE cor. conc. traffic light base
RM6 321.0°- 55.33ft. - Ex. Pk & Sh SW/S p. pole

CORNER DESCRIPTION		
CORNER OF SECTION(S) S 1/2 cor. Sec. 32		
TOWNSHIP 51N	RANGE 32W	COUNTY, MISSOURI Clay
MISSOURI COORDINATE SYSTEM (1983) (METRIC)		
NORTH 334,513.8602m	EAST 39°10'50.669928"	WESTERN 848,159.3812m Scale 0.99994122" Conv. -0°00'48.4516"



SURVEYORS CERTIFICATE

This is to certify I, Susan Magierowski, have restored reestablished found evidence of the corner described and that the sketch and statements contained hereon correctly represent the evidence, corner, monuments, and accessories for this corner.

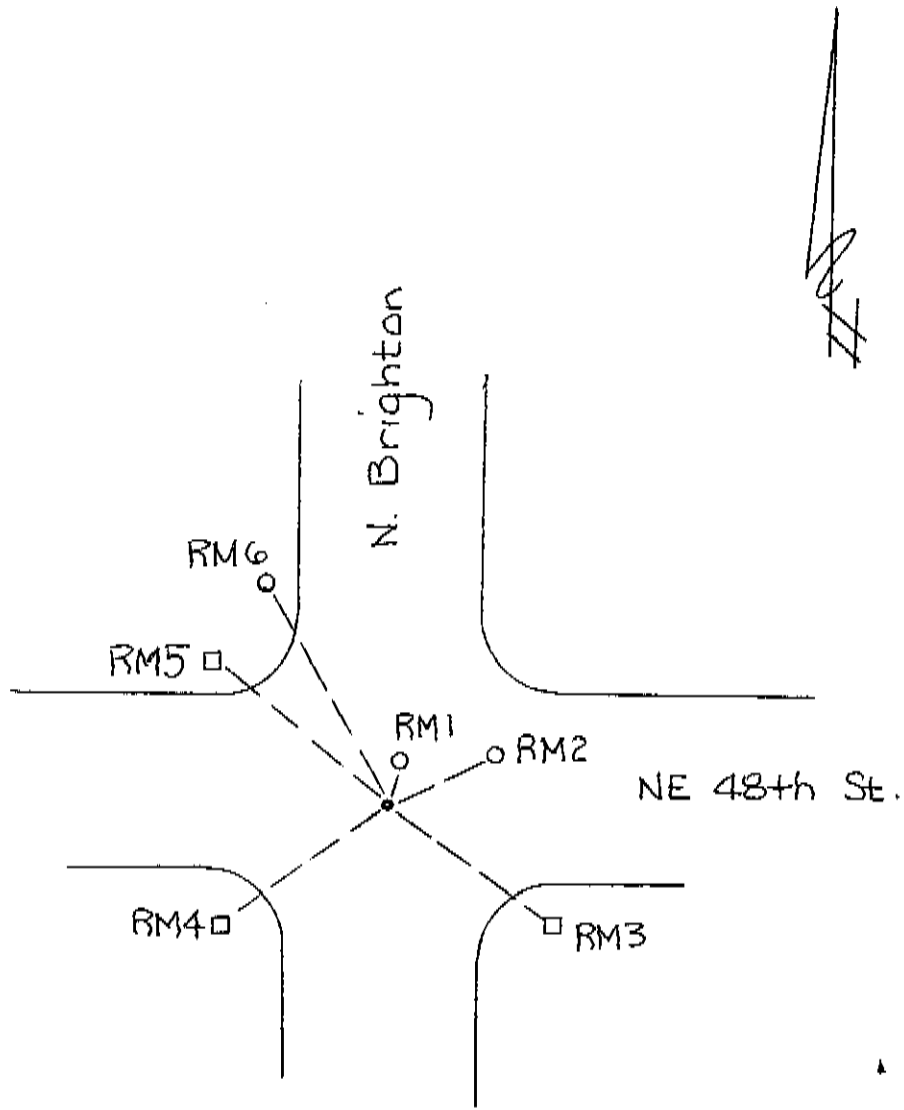
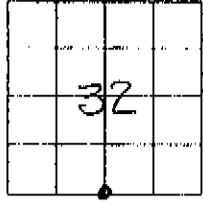
SIGNATURE <i>Susan Magierowski</i>	DATE 7-11-94	REGISTRATION NUMBER LS-2213
---------------------------------------	-----------------	--------------------------------

NOTE This document does not create an implied warranty by either the surveyor or the Department of Natural Resources as to conclusive evidence of the corner location.

I, the undersigned STATE LAND SURVEYOR, do hereby certify that the foregoing instrument was filed for record with the MISSOURI LAND SURVEY on:

STATE LAND SURVEYOR <i>John S. Meyer</i>	DATE August 5, 1994	CORNER INDEX NO. Z-7	DOCUMENT NUMBER 600-53738
---	------------------------	-------------------------	------------------------------

SKETCH OF CORNER



Sheet <u>2</u> of <u>2</u>	DOCUMENT NUMBER 600-53738
----------------------------	------------------------------